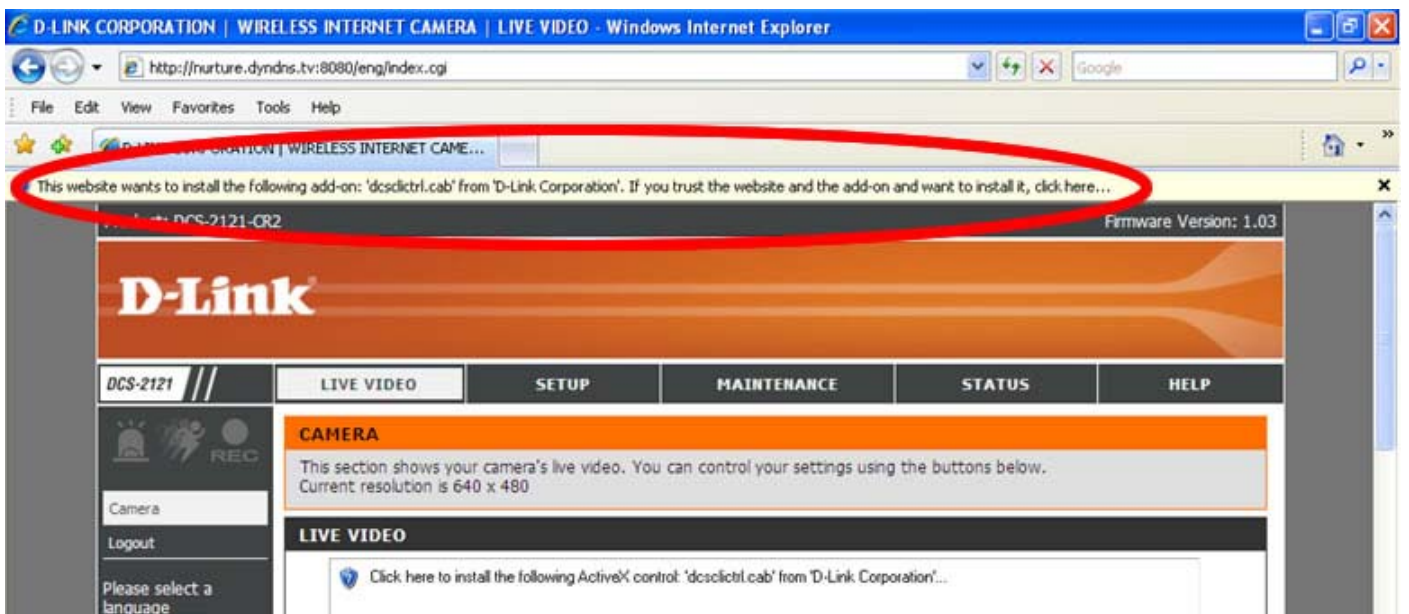
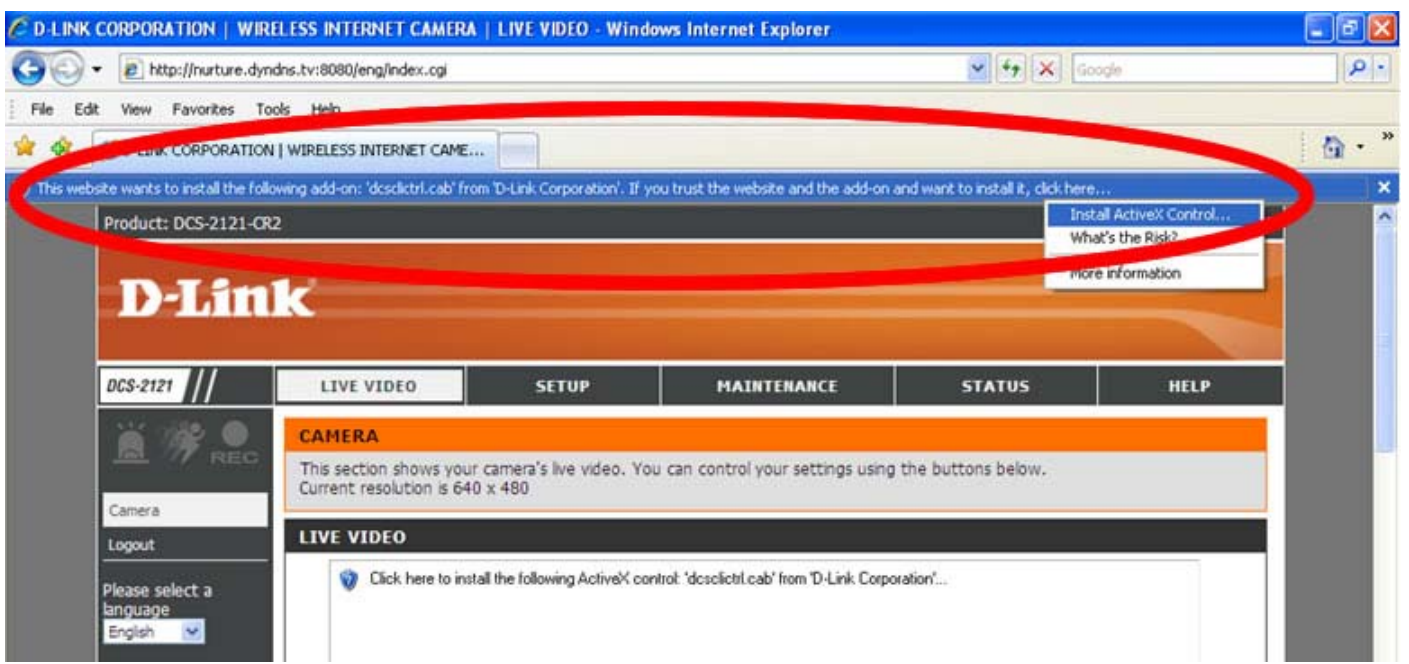


Guide: How to Access the Observation Points

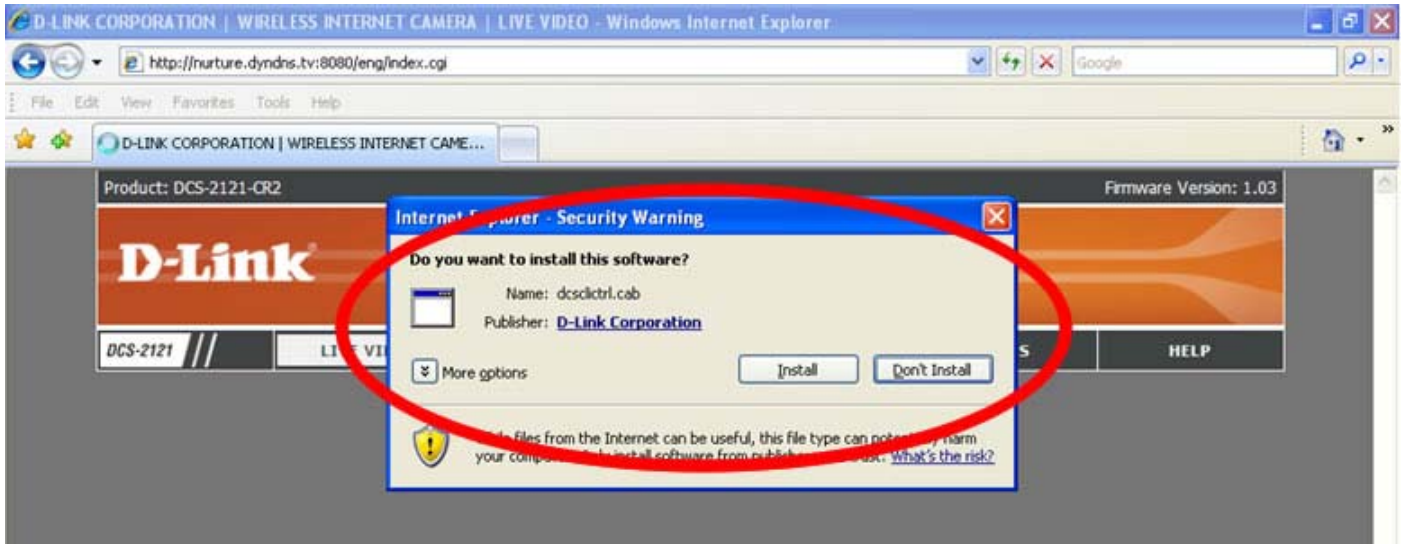
1. If this is the first time you are accessing our OP, you may be prompted with the following message:



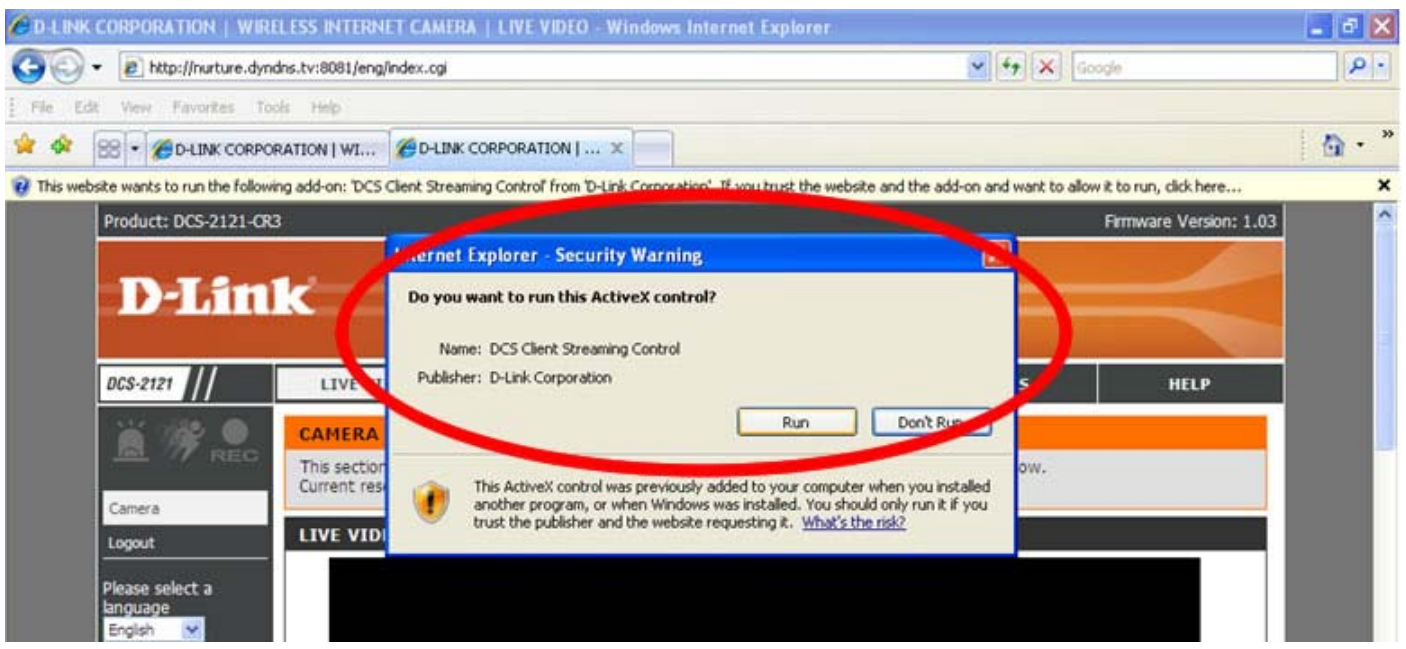
2. Click on the prompt bar and choose 'Install ActiveX Control...' when prompted:



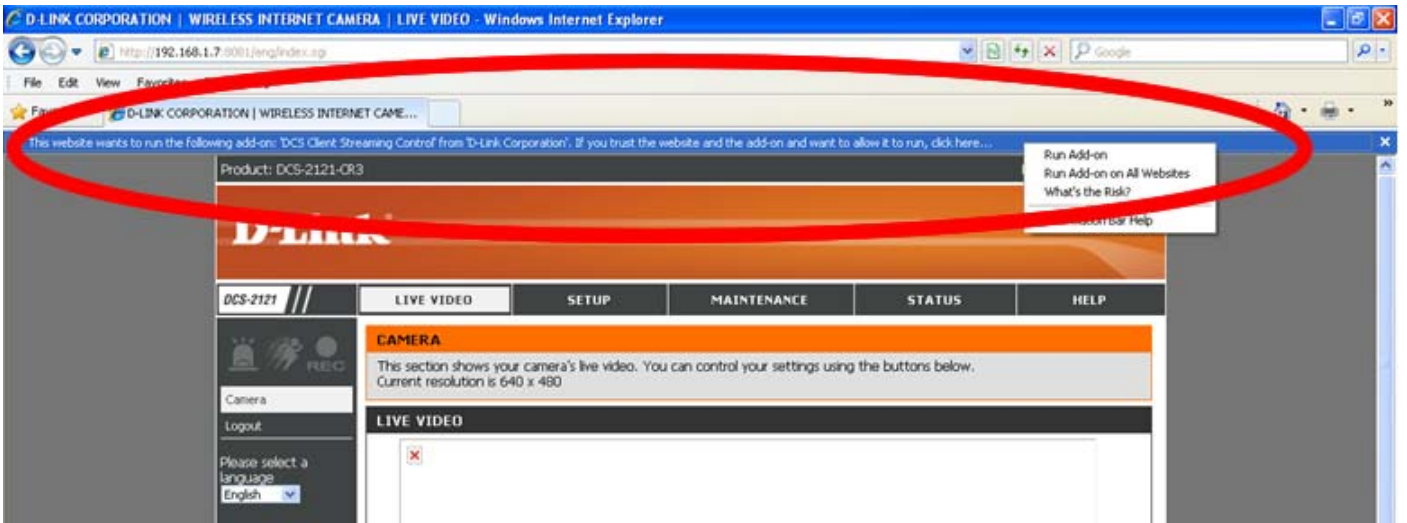
3. An installation dialog box will prompt you to install the software. Click 'Install' to continue:



4. After installation, a dialog box will prompt you 'Do you want to run this ActiveX control?'. Click 'Run' to continue:



5. The web browser will refresh with the following prompt bar appearing at the top. Click on it and select 'Run Add-on'.



6. The web browser will next prompt you for the 'User Name' and 'Password'. Enter the details that you have obtained from the School and click 'OK'.



7. If your log-in details are correct, the 'live' Observation Point will load and is ready for your viewing.

